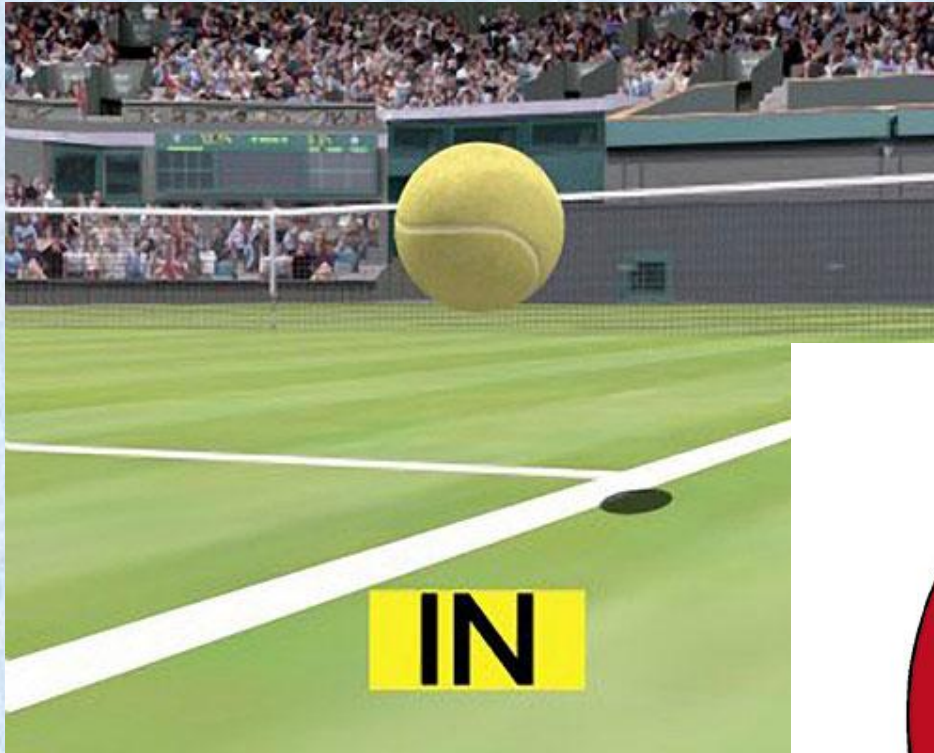


SKML scoresysteem



Hawk eye

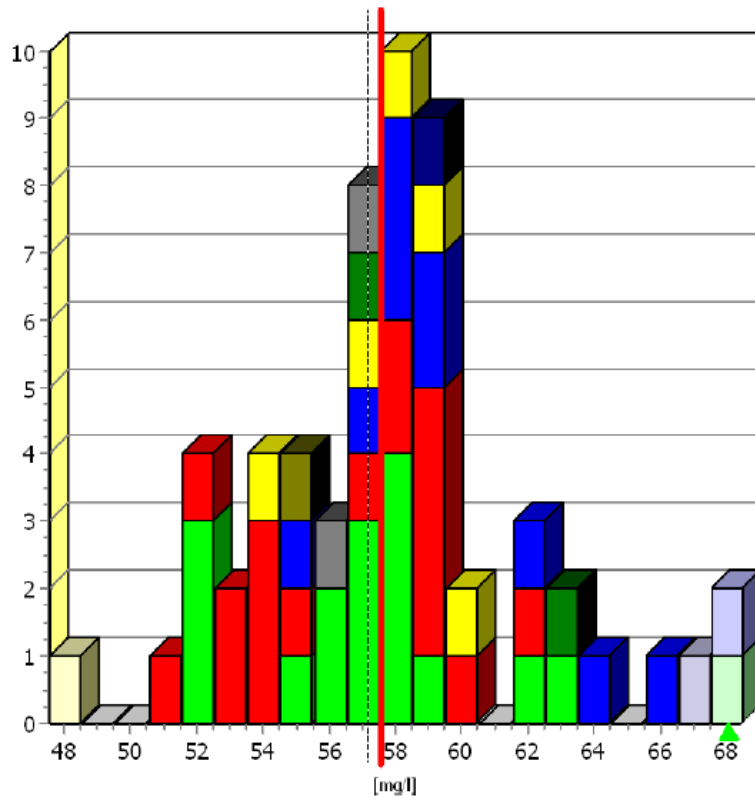


of

Bulls eye

Fenobarbital

mg/l

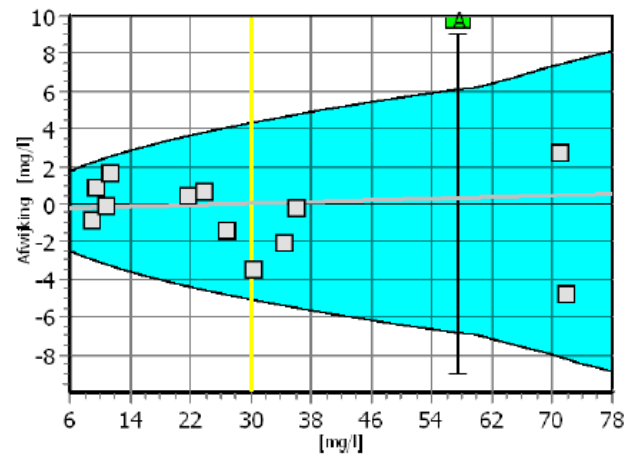


Cumulatieve statistiek over 3 jaar:

Regressielijn: $y = 0,998 \cdot x$

Juistheid: -0,2%

Imprecisie: 5,5%



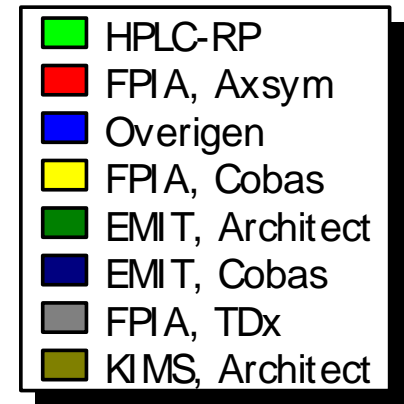
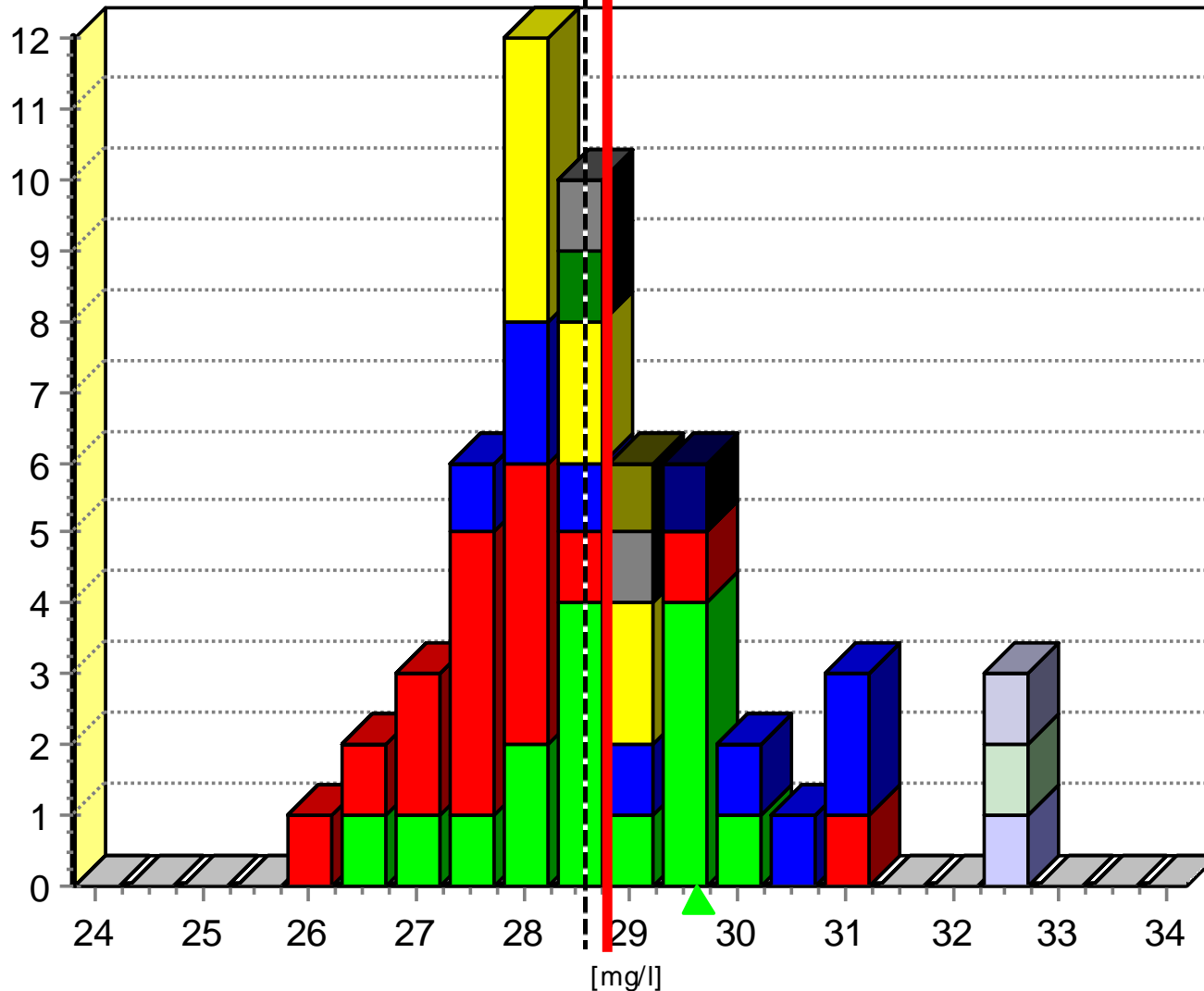
Methodegroep

Methode	Gem.	V.C.	nTot	nUit	%	Range [%]
Overall	57,1	5,3%	58	5	99	46 - 130
EMIT, Architect	59,6		2	0	104	99 - 109
EMIT, Cobas	59,0		2	1	103	103 - 116
FPIA, Axsym	56,3	5,7%	17	0	98	89 - 108
FPIA, Cobas	57,3	4,1%	6	1	100	46 - 104
FPIA, TDx	56,4		2	0	98	97 - 100
HPLC-RP	56,7	5,5%	17	1	99	90 - 128
KIMS, Architect	55,0		1	0	96	96 - 96
Overigen	58,8	4,6%	11	2	102	96 - 130
Uw uitslag	73,4				128	
Ingewogen waarde :	57,46					

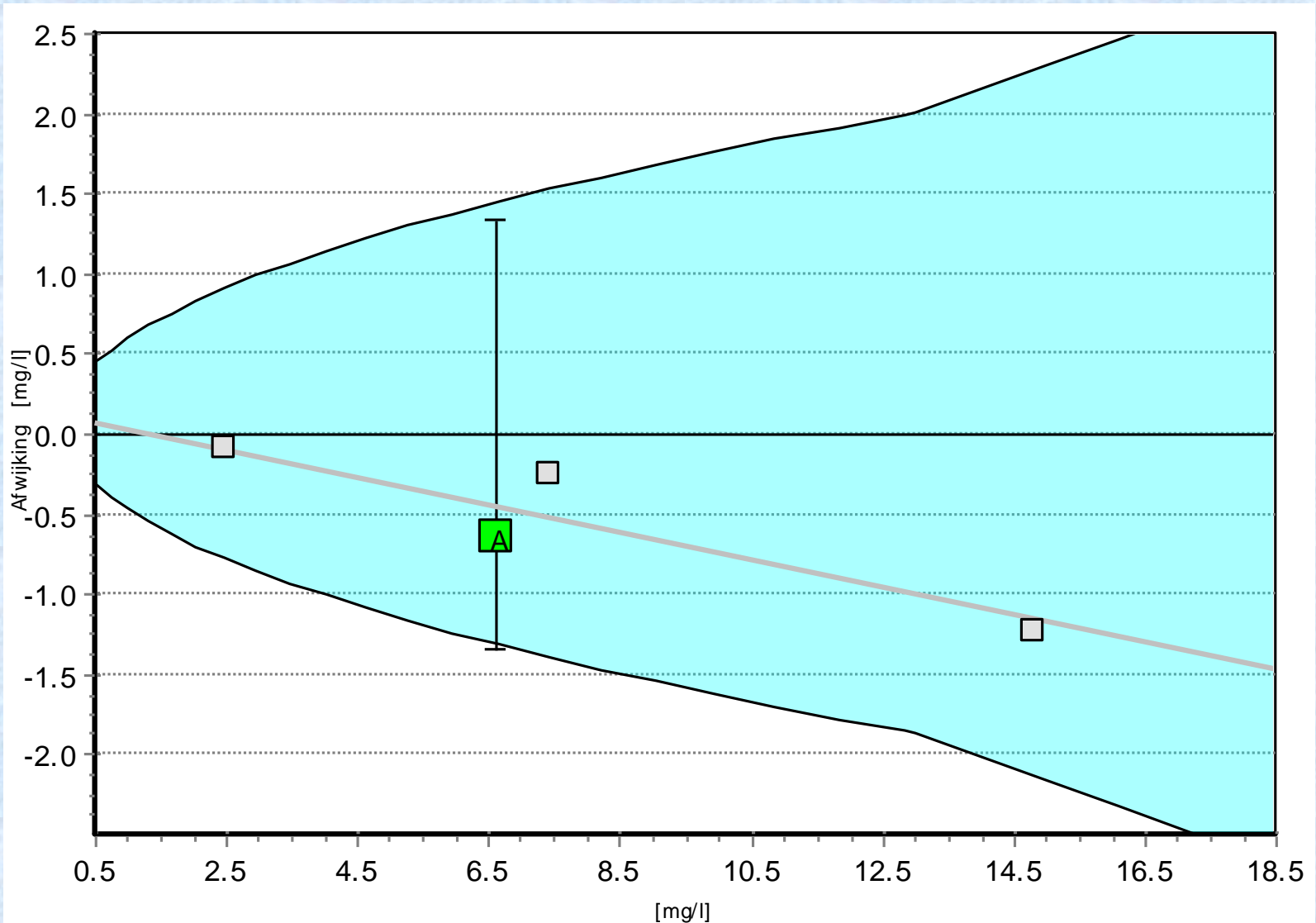


Stichting Kwaliteitsbewaking
Medische Laboratoriumdiagnostiek

Histogram



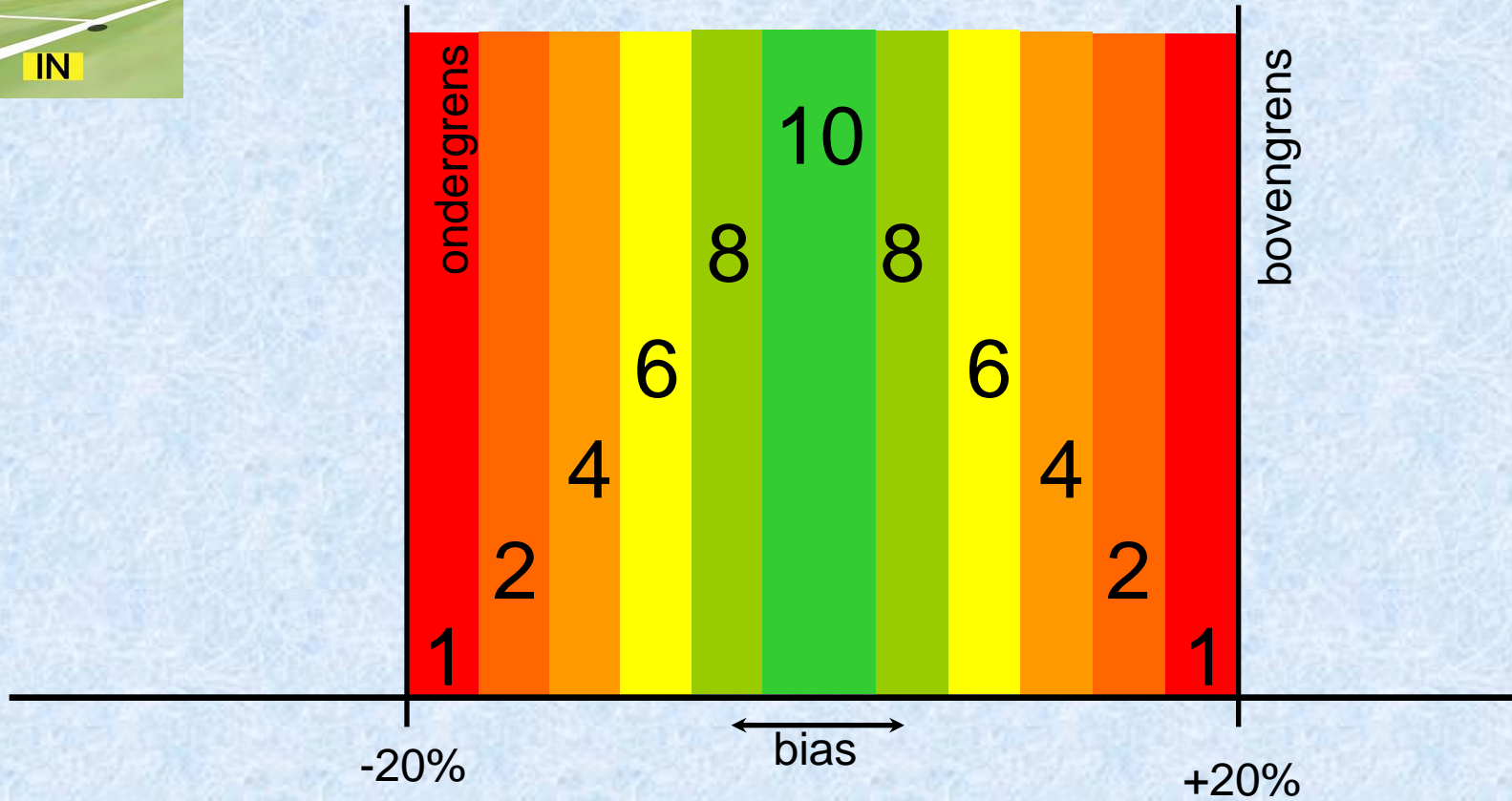
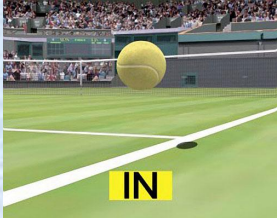
Differenceplot



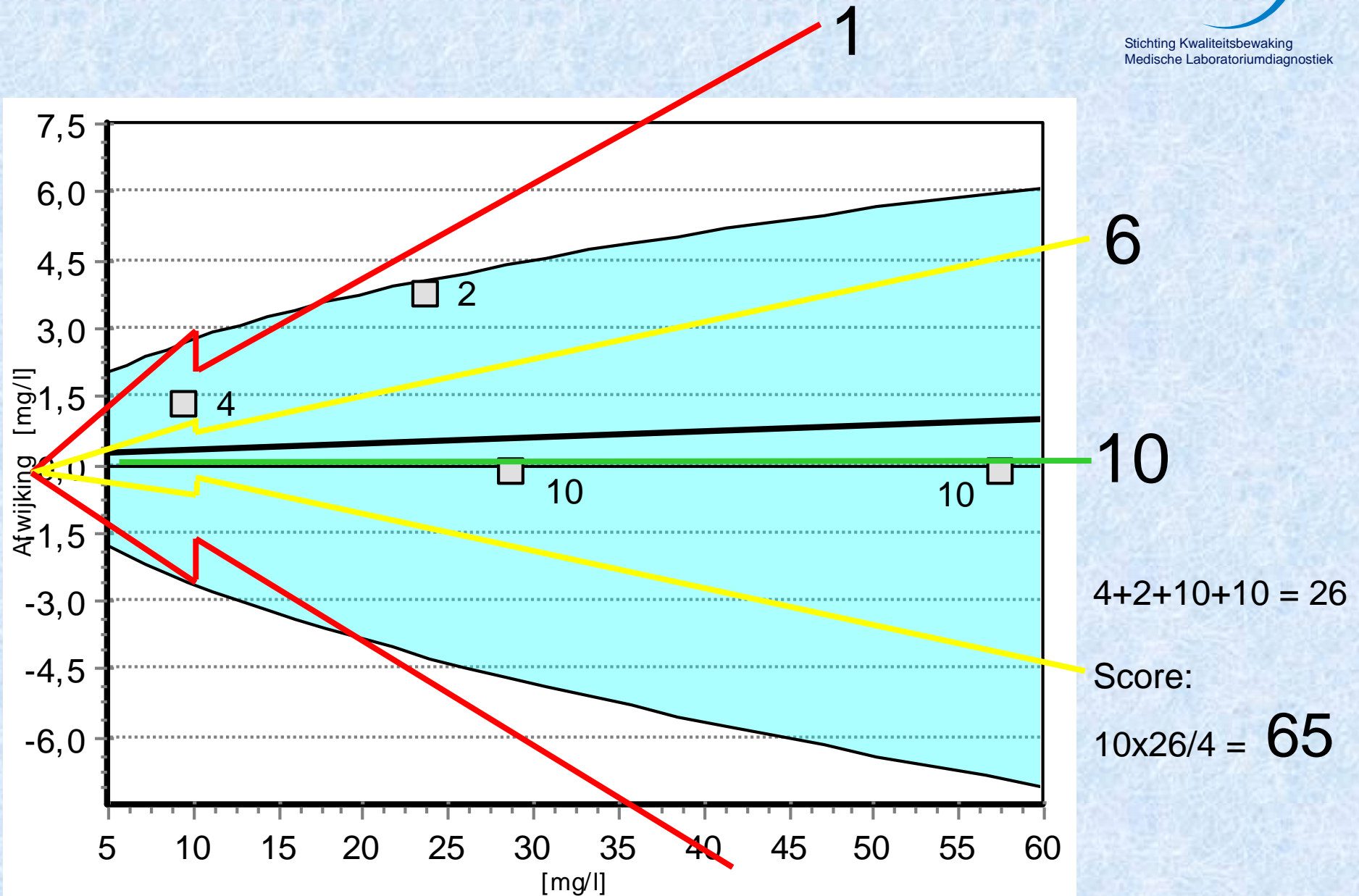
Scoreberekening KKG T

- Uitslag wordt vergeleken met theoretische waarde
- Geen afwijking geeft score 10
- Afwijking van 20% geeft score 1
- Tussenliggende waarden naar rato
- Totaalscore omgerekend naar 100 punten

Scoreberekening KKG T



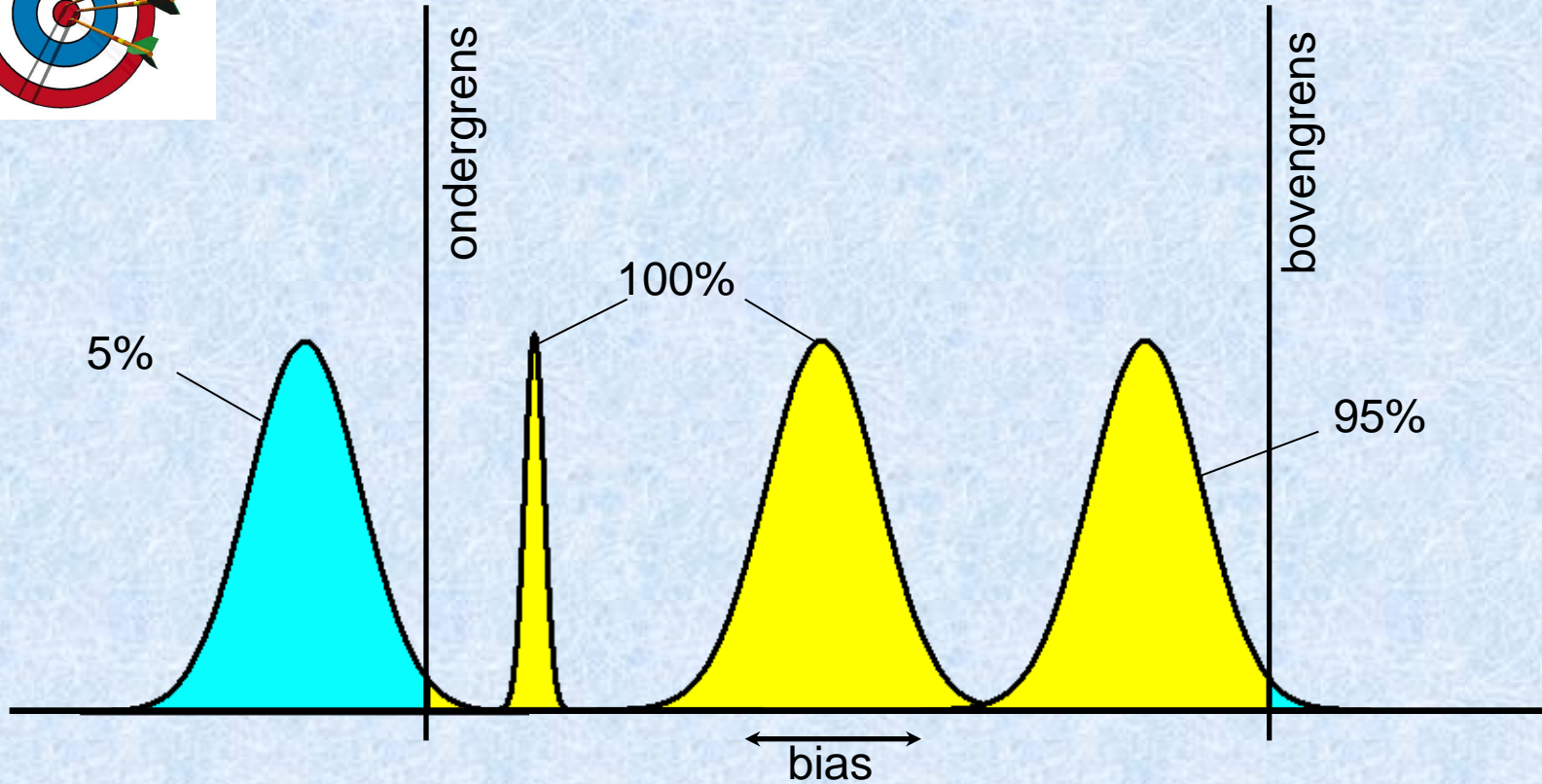
Scoreberekening KKG T



Scoreberekening QBase

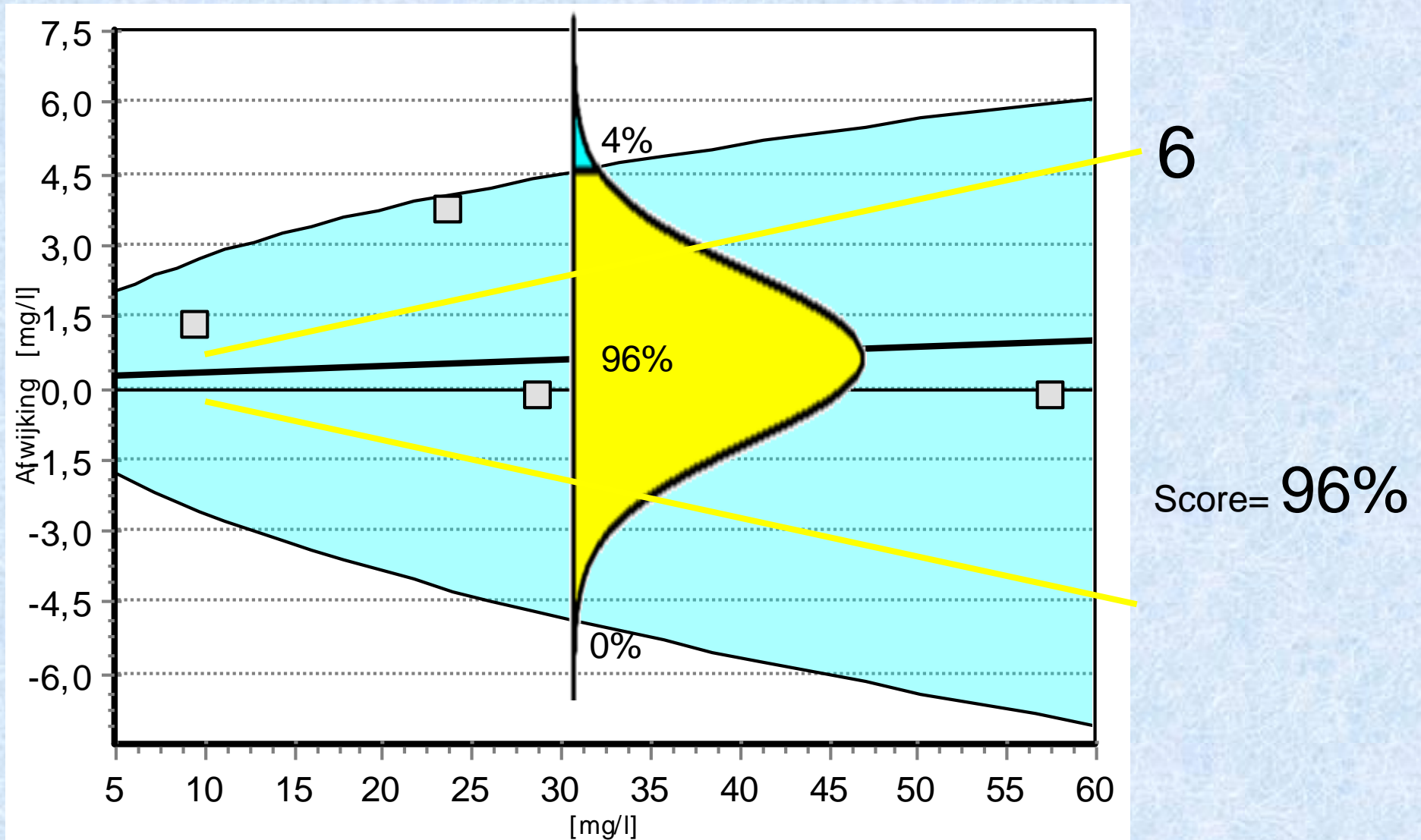
- Bias en imprecisie worden berekend
- **Kwaliteitsnorm** bepaalt grenzen waarbinnen 95% van de uitslagen horen te liggen
- Gauss curve op basis van bias en imprecisie voorspelt welk deel van de uitslagen voldoet aan deze **kwaliteitsnorm**

Scoreberekening QBase



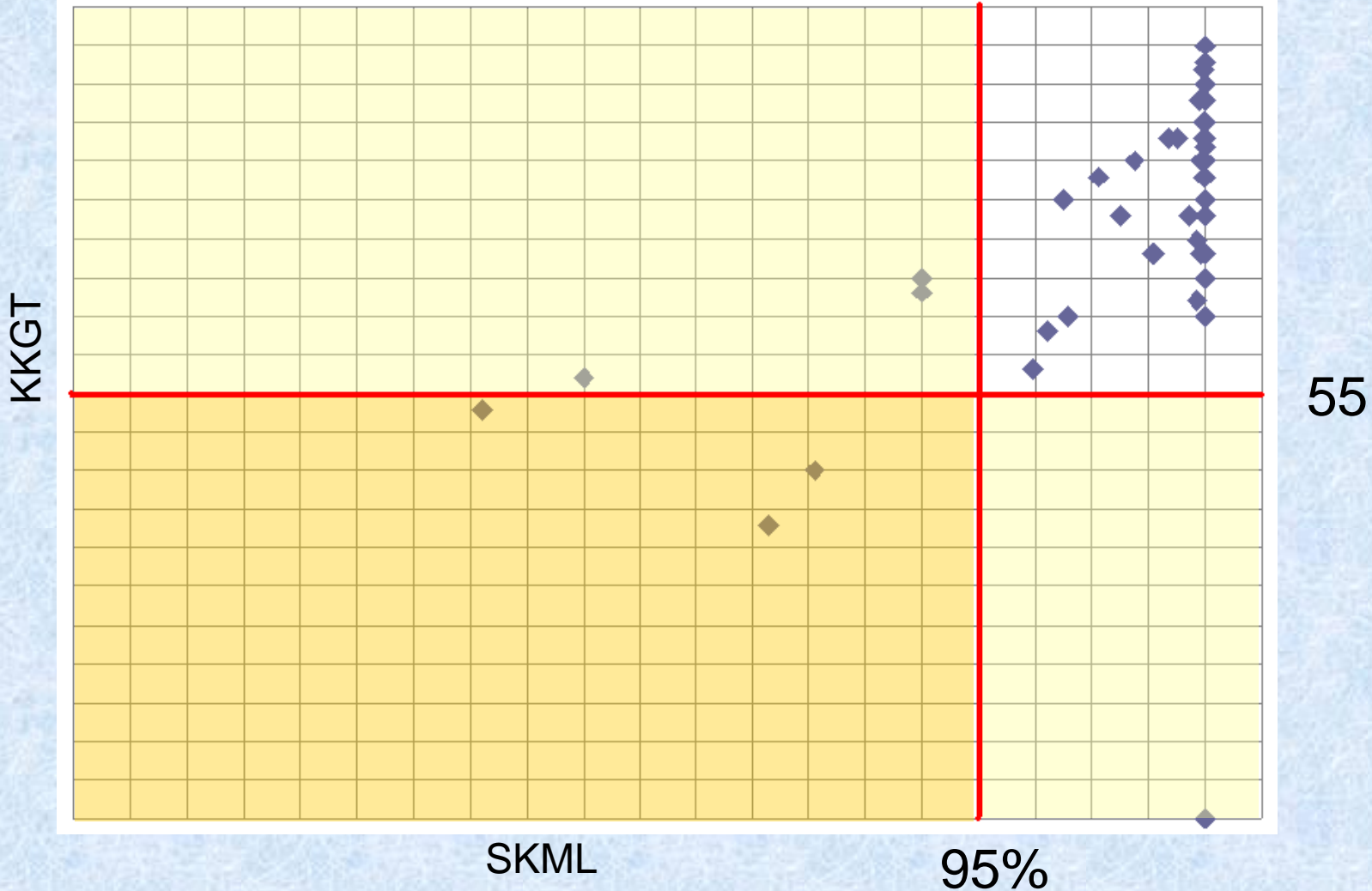
Uitgangspunt: Score is verwachtingspercentage van uitslagen die **voldoen aan de kwaliteitsnorm**

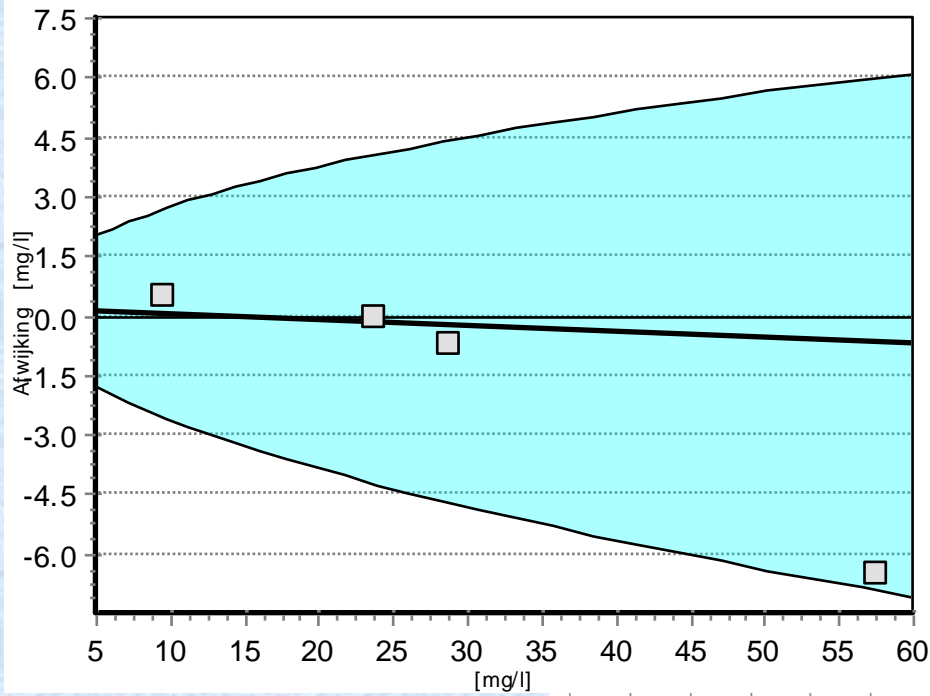
Scoreberekening QBase



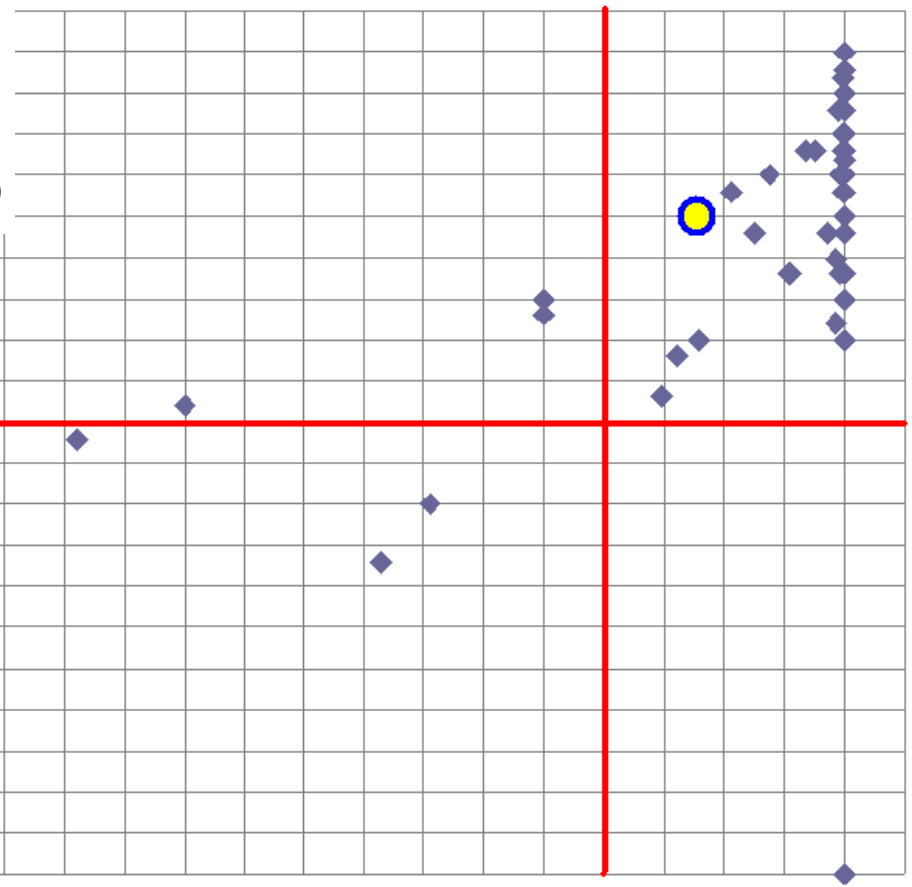
Vier-kwadranten vergelijking

Fenobarbital 2010

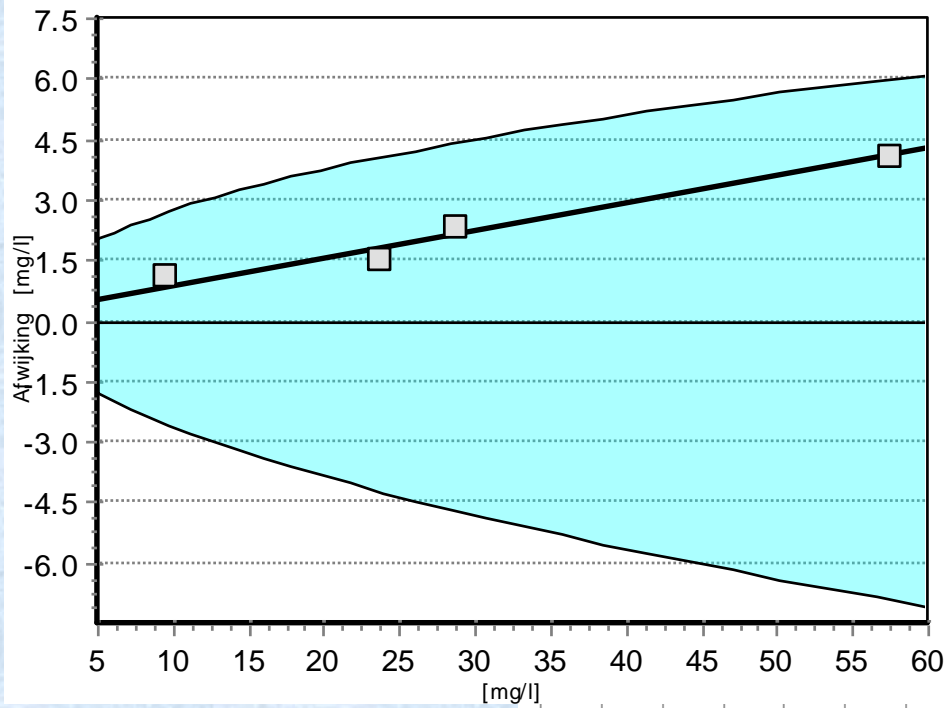




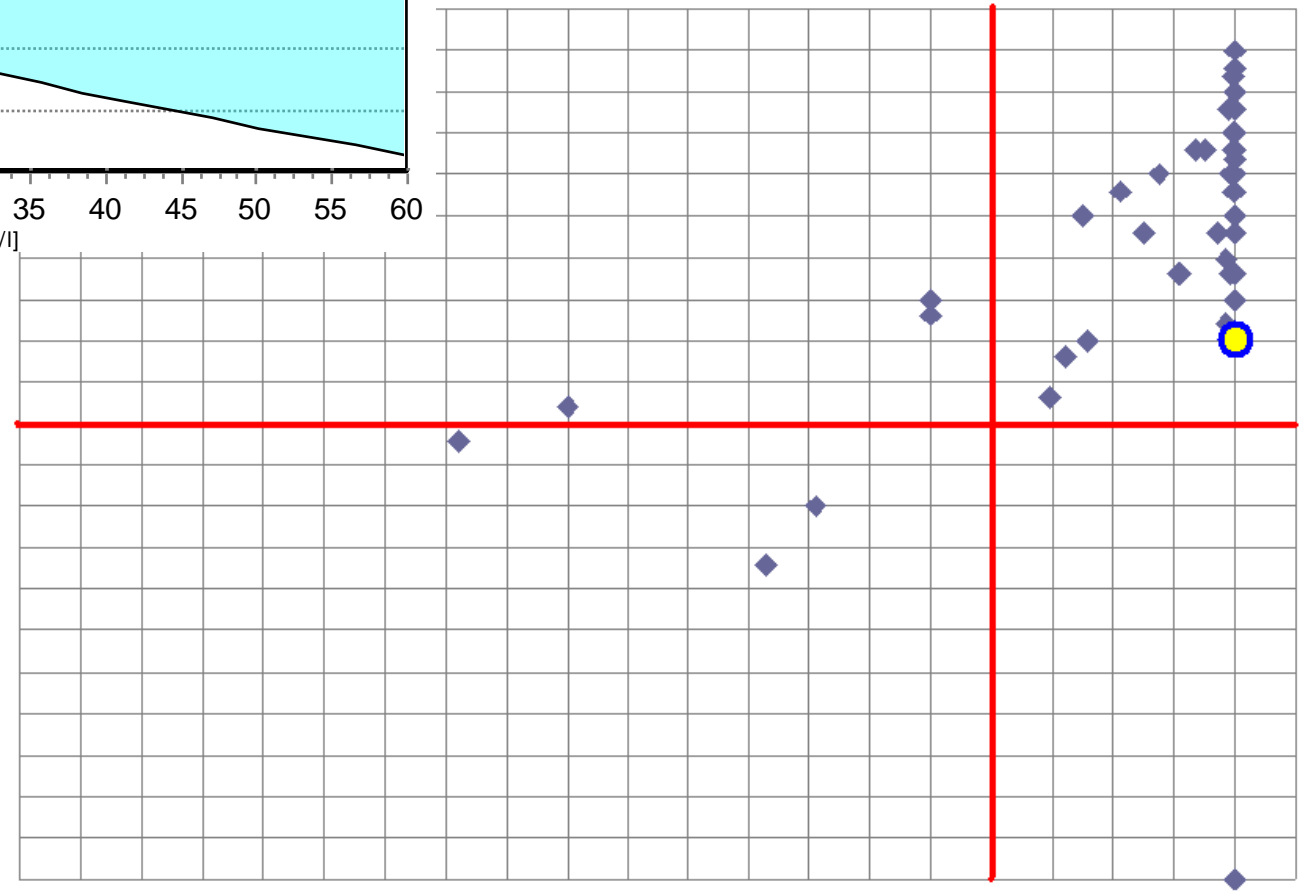
Fenobarbital 2010



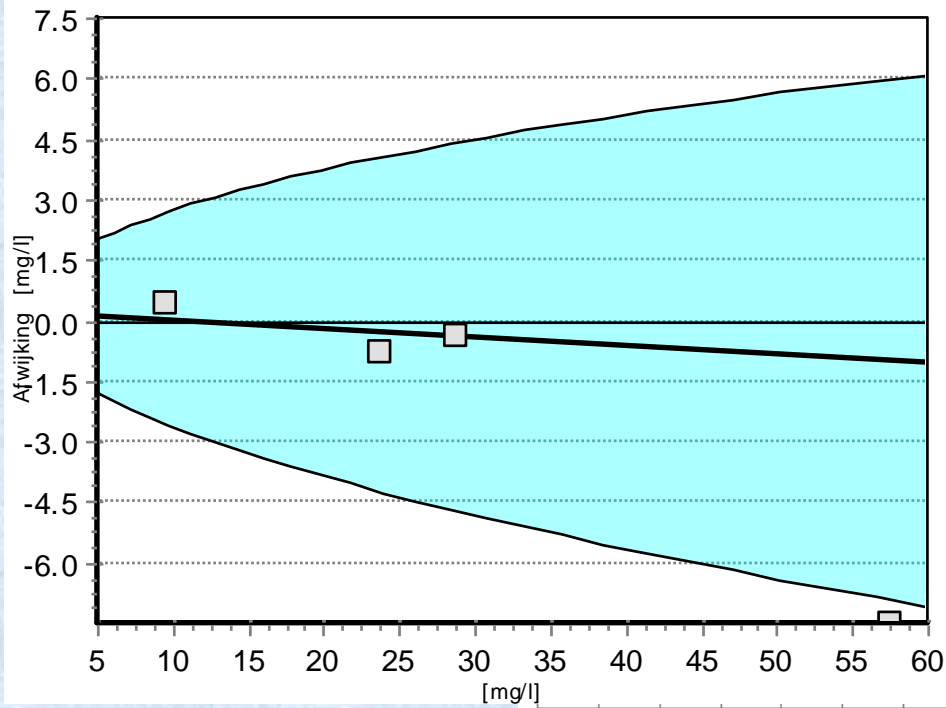
QBase	97%
KKGT	80



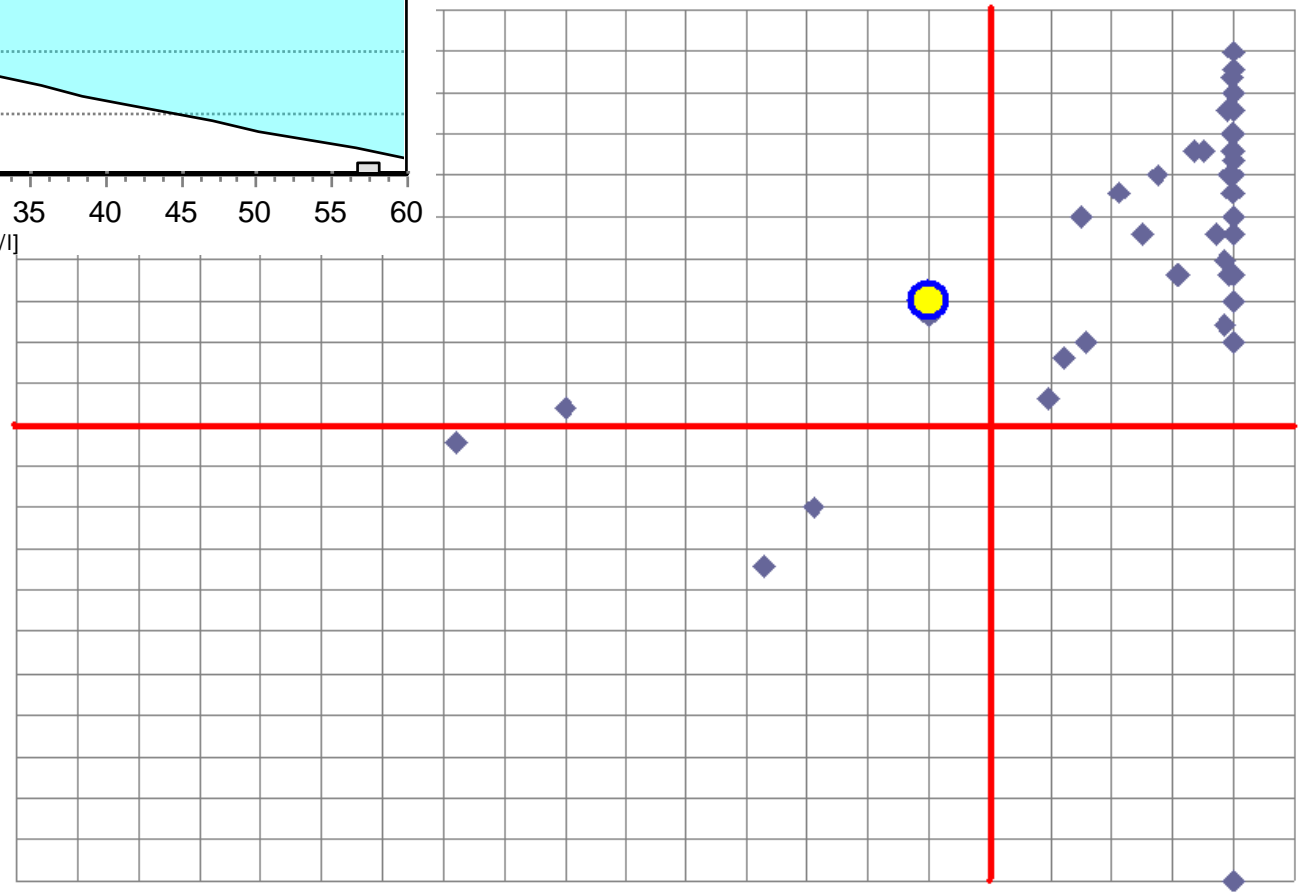
enobarbital 2010



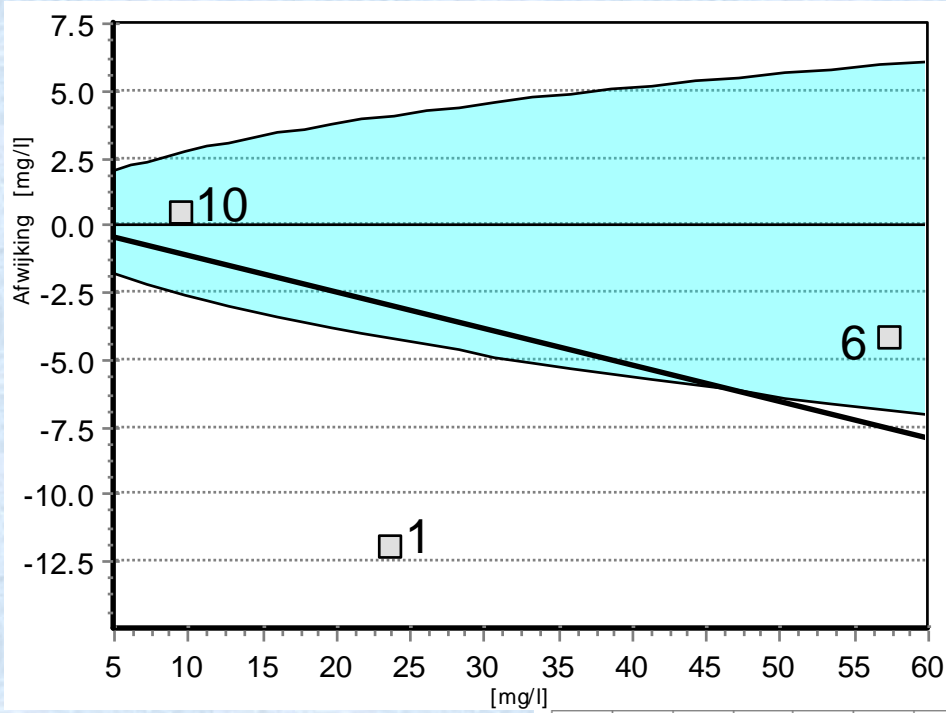
QBase	100%
KKGT	65



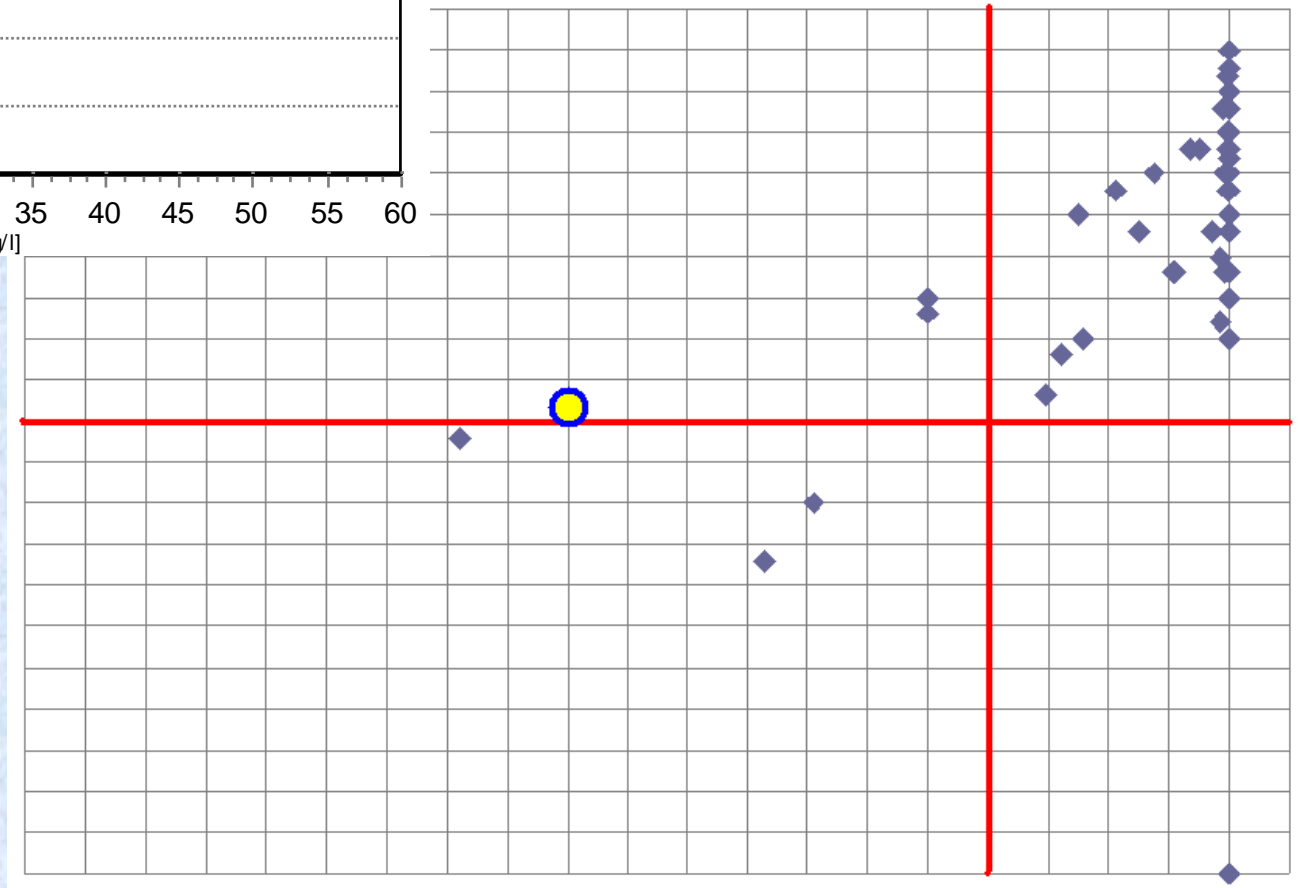
enobarbital 2010



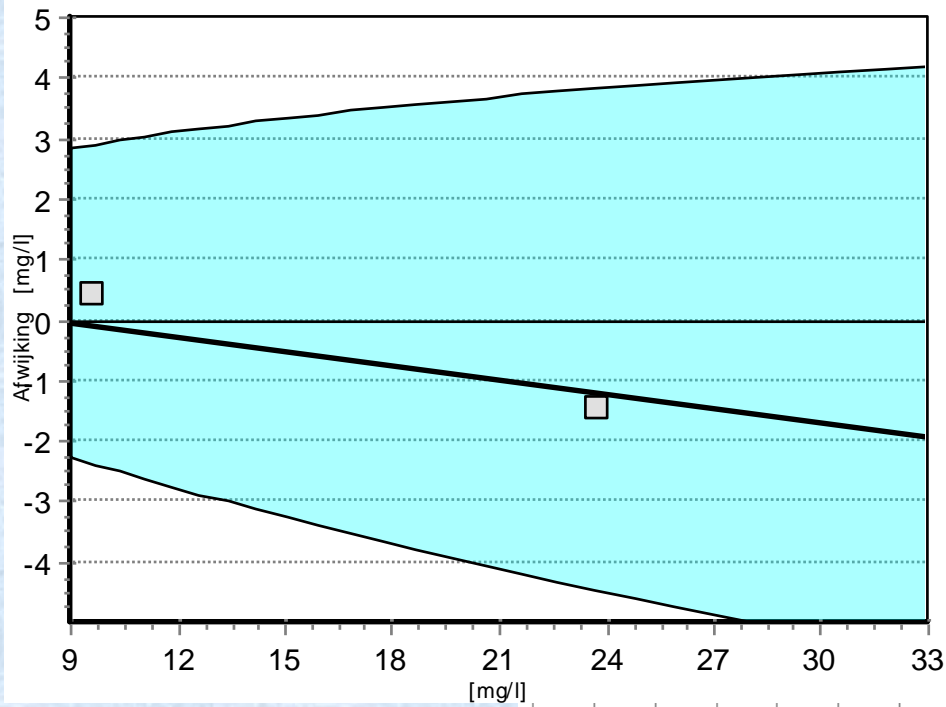
QBase	94%
KKGT	70



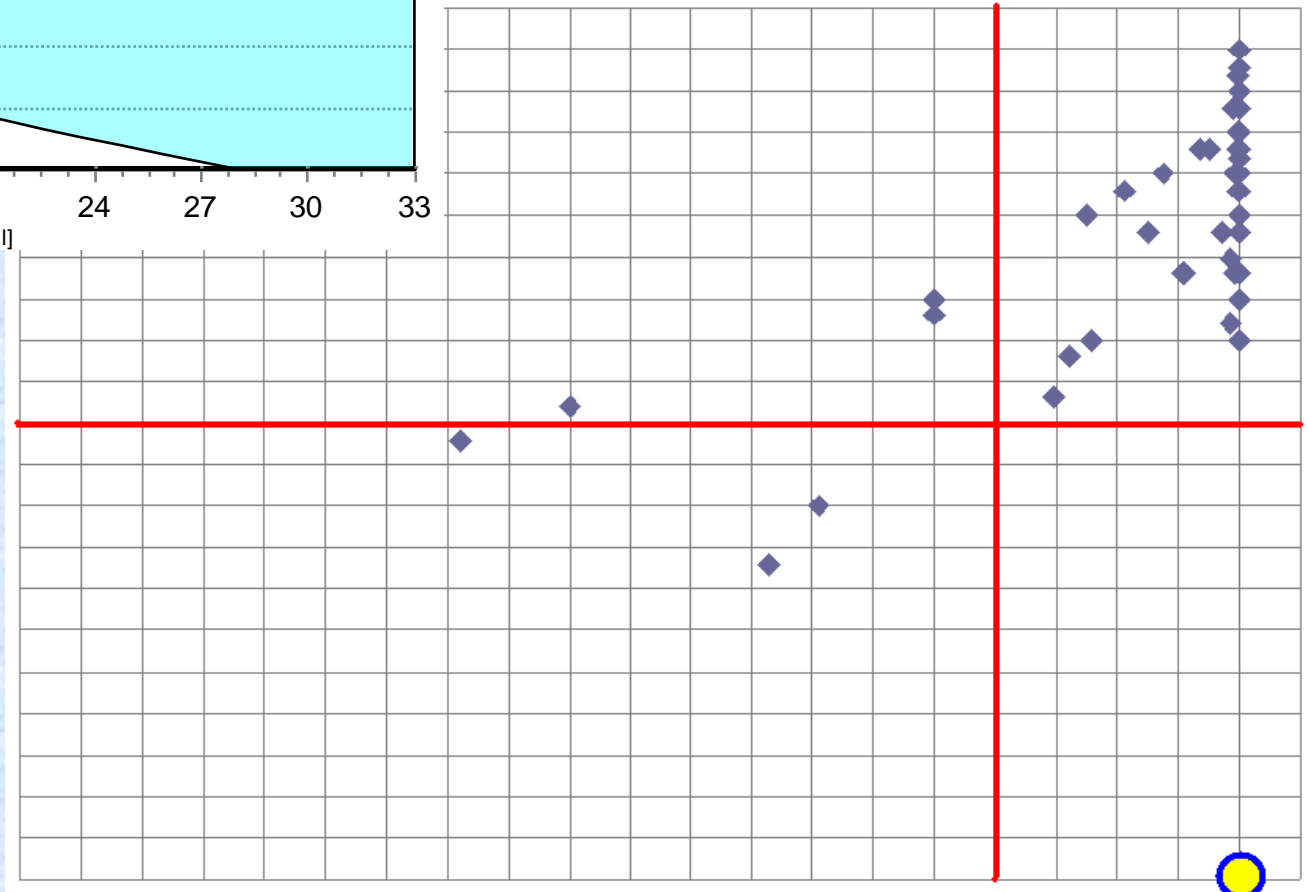
Fenobarbital 2010



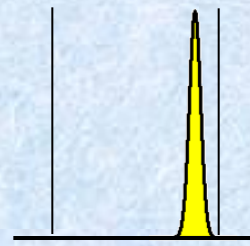
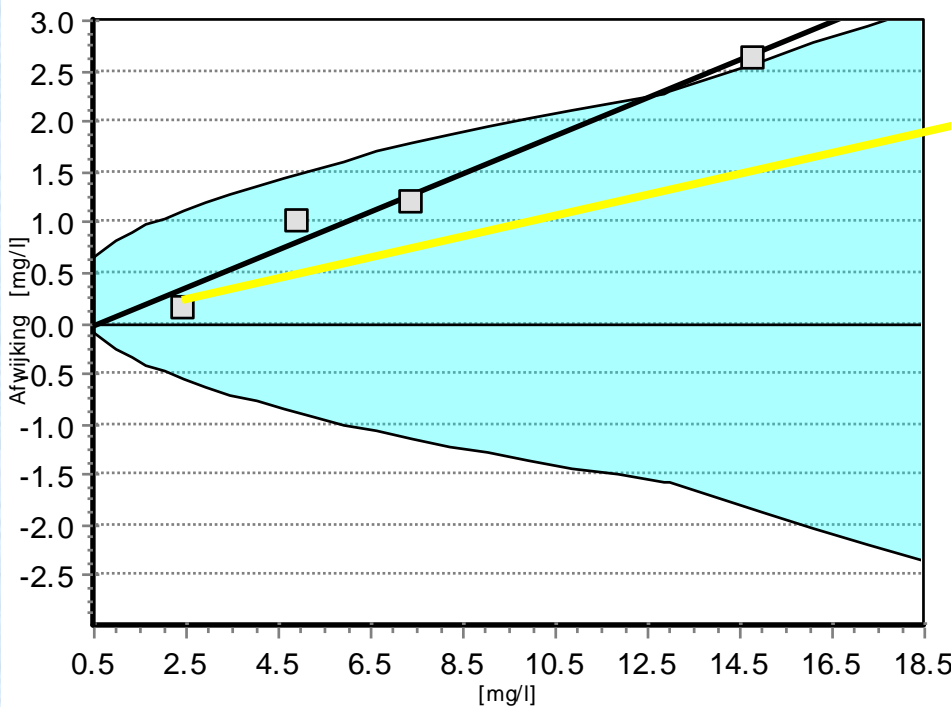
QBase	45%
KKGT	57



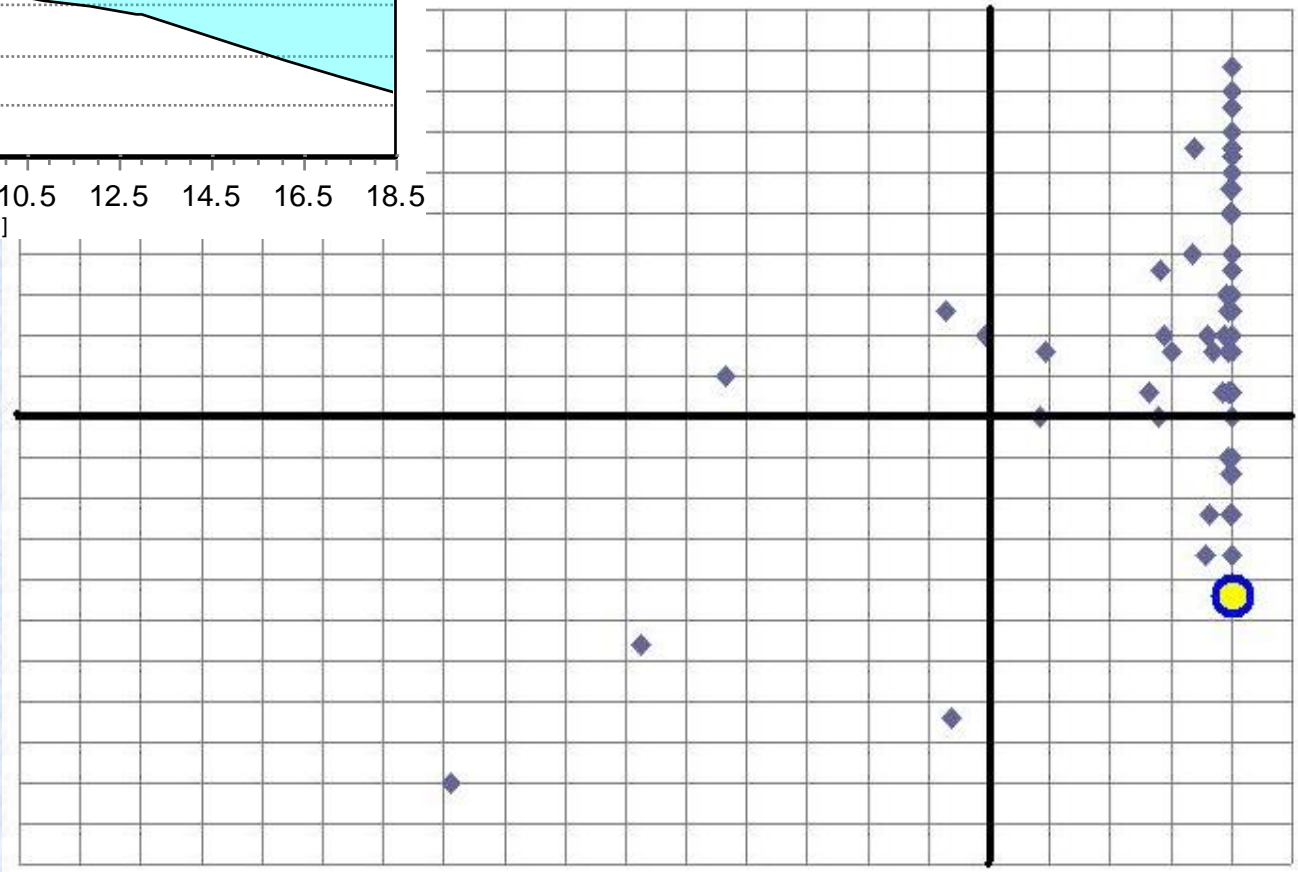
enobarbital 2010



QBase	100%
KKGT	-----

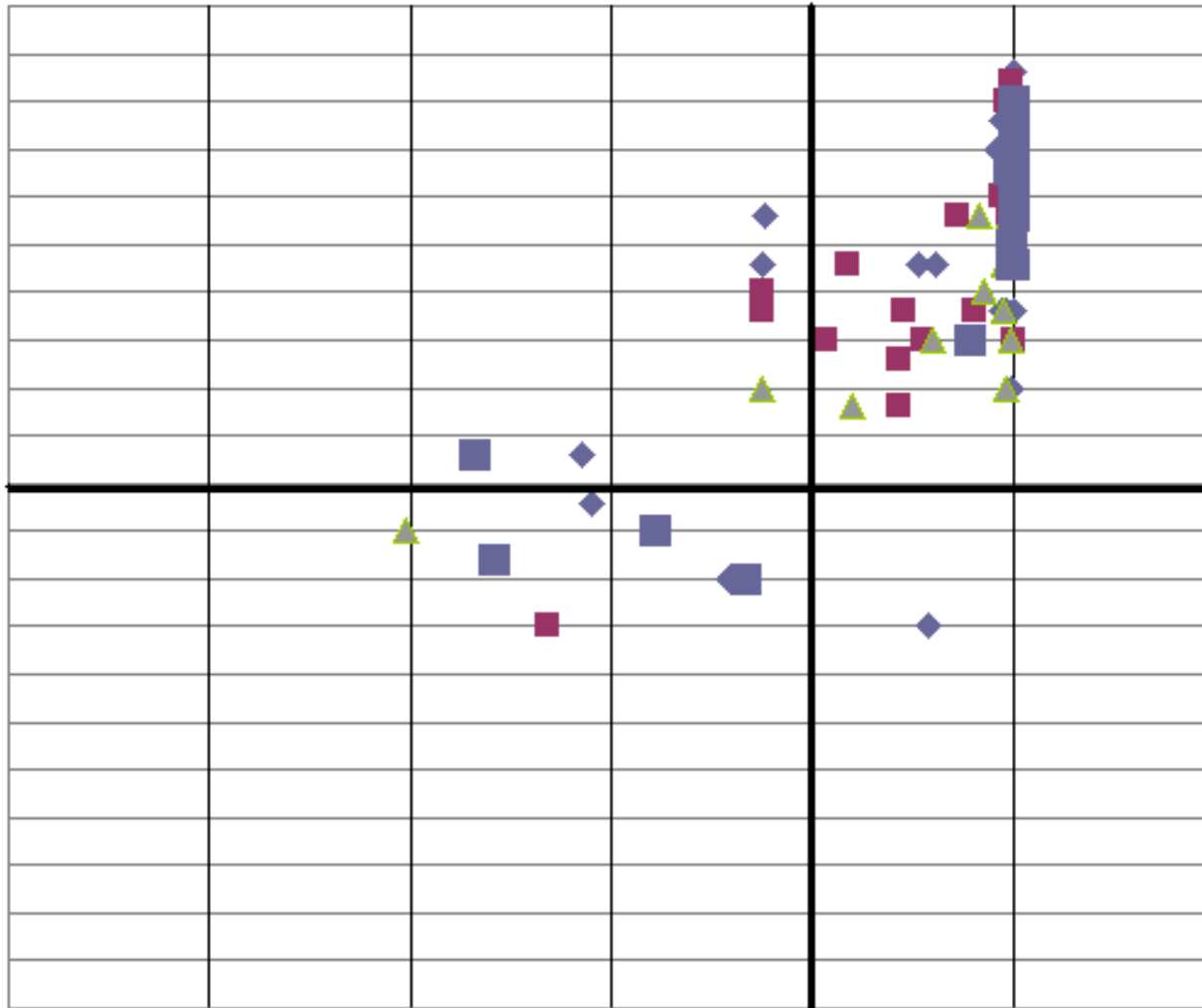


Carbamazepine 2010

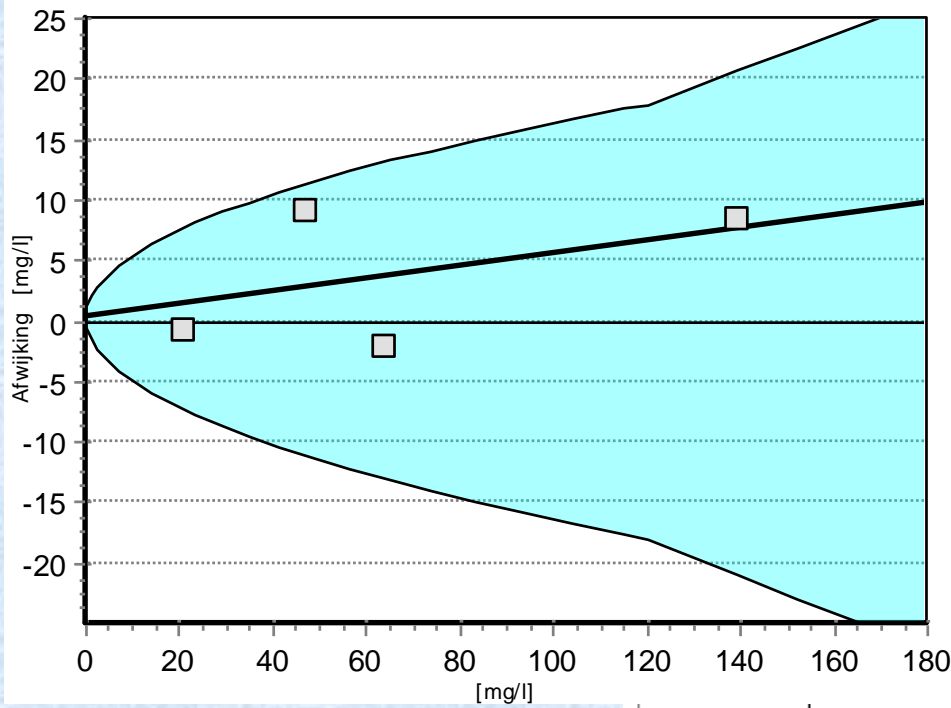


QBase	100%
KKGT	33

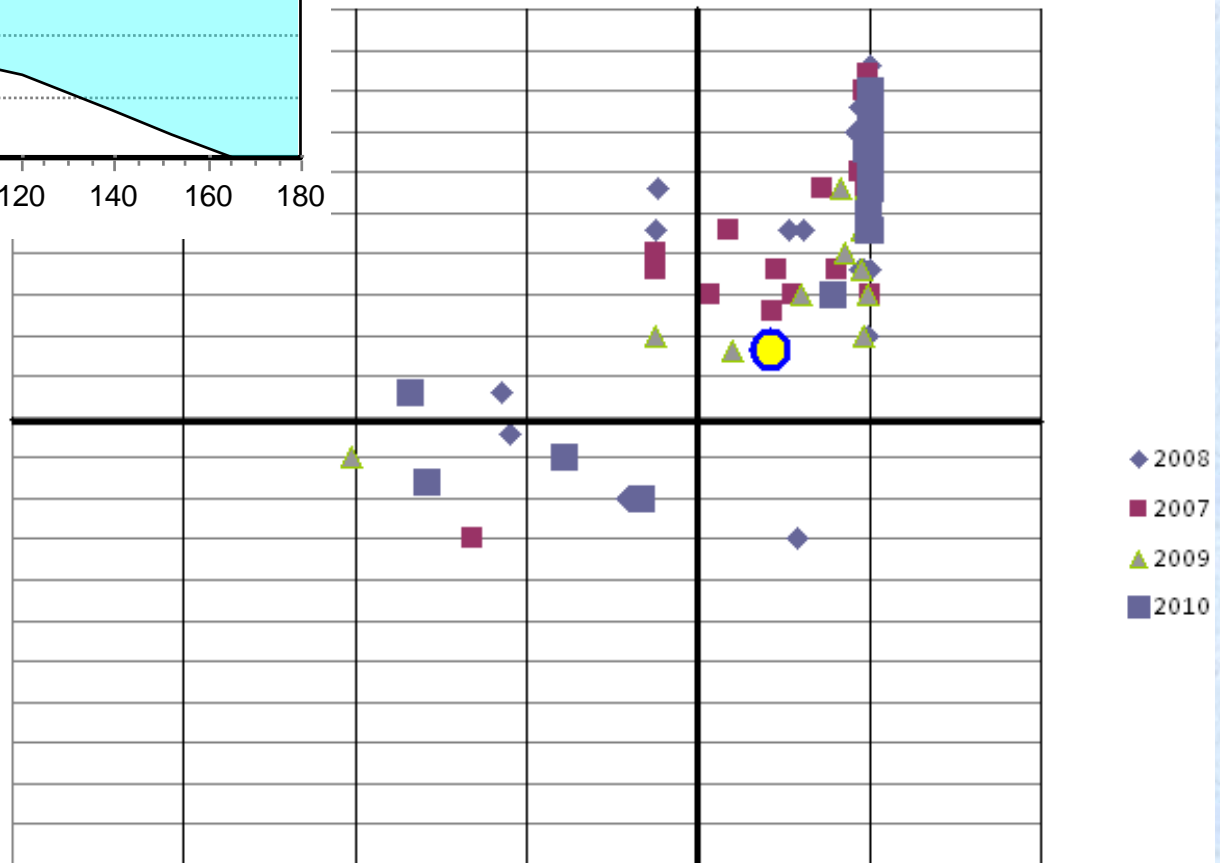
Ethosuximide 2007 + 2008 + 2009 + 2010



- ◆ 2008
- 2007
- ▲ 2009
- 2010



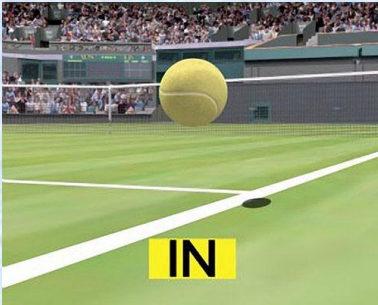
roxithromycine 2007 + 2008 + 2009 + 2010



QBase	98%
KKGT	63

Samenvatting

KKGT



- Score is gemiddelde van scores per monster
- Slecht resultaat kan (deels) gecompenseerd worden door goed resultaat
- Minimaal 55 punten halen
- Tenminste 3 uitslagen insturen

QBase



- Score op basis van bias en precisie
- **Kwaliteitsnorm** als maatlat
- Slechte bias kan (deels) gecompenseerd worden door goede precisie
- Minimaal 95% scoren

DANK !!

- Tessa Leenders (4 kwadranten plaatjes)
- Daan Touw
- U (voor uw aandacht)

